

File Transfer off Campus

By Todd Rosenkrantz

Transferring files from a server on a Texas Wesleyan Active Directory based server to an off site computer via CSCDEVPROD01

Requirements:

1. An active directory account with appropriate access to the desired files.
2. An account with shell access to CSCDEVPROD01.
3. A Linux (or posix) based computer OR a windows based computer with Putty and WinSCP

Step 1:

Establish your shell connection via ssh or putty

ssh [username@cscdevprod01.txwes.edu](ssh://username@cscdevprod01.txwes.edu)

or

use Putty

Step 2:

Use Midnight Commander to establish the connection from cscdevprod01 to the windows server.

Type mc on the command line.

Press the Tab key as needed to make sure the cursor is in the right side window.

Press F9, use the arrow keys to select "Left" then down to "SMB Link"

```

Left      File      Command  Options  Right
-----
Listing mode...
Quick view  C-x q
Info        C-x i
Tree
-----
Sort order...
-----
Filter...
-----
FTP link...
Shell link...
SMB link...
-----
Rescan      C-r

.zshrc      |      658 Feb  4 15:25
-----
/..
-----82G (82%) of 99G

<--~/Programming-->
-----
Name      Size      MTime
UP--DIR
/..
/Prog4    4096 Feb 18 00:50
/c++      4096 Feb  8 15:05
/java     4096 Feb  8 15:05
-----
/..
-----82G (82%) of 99G

Hint: Are some of your keys not working? Look at Options/Learn keys.
[sarosenkrantz@CSCDEVPROD01 ~]$
1Help 2Menu 3View 4Edit 5Copy 6RenMov 7Mkdir 8Delete 9PullDn 10Quit

```

now enter the name of the server to which you wish to connect and press Enter.

```

Left      File      Command  Options  Right
-----
Name      Size      MTime
/..
/.kde     4096 Feb  4 15:25
/.mc      4096 Feb  8 15:05
/.mozill
/Progra
/mymoun
/public
/temp
.Xauth
.bash
.bash_logout  33 Feb  4 15:25
.bash_profile 176 Feb  4 15:25
.bashrc        124 Feb  4 15:25
.emacs         515 Feb  4 15:25
.zshrc         658 Feb  4 15:25
-----
/..
-----82G (82%) of 99G

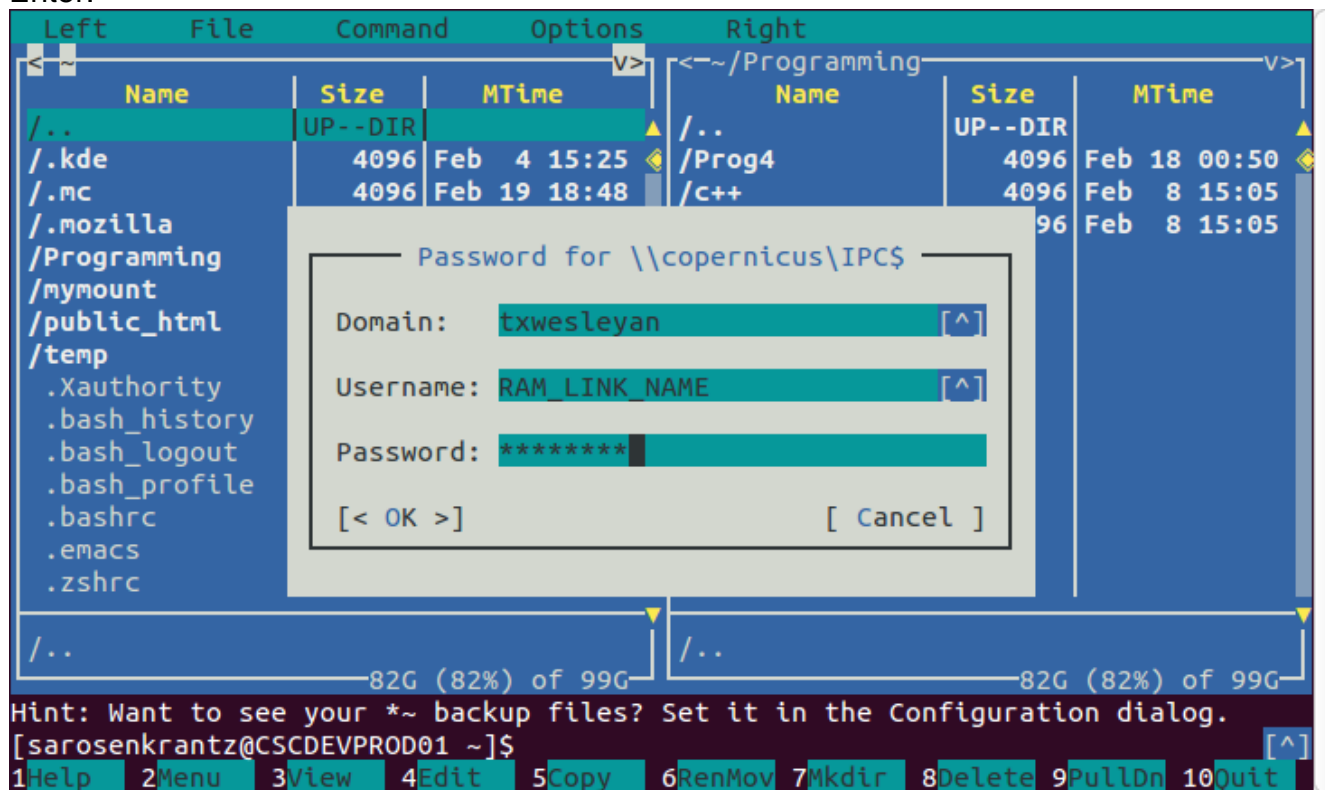
<--~/Programming-->
-----
Name      Size      MTime
UP--DIR
/..
/Prog4    4096 Feb 18 00:50
/c++      4096 Feb  8 15:05
-----
/..
-----82G (82%) of 99G

SMB link to machine
Enter machine name (F1 for details):
copernicus
[< OK >] [Cancel]

Hint: Are some of your keys not working? Look at Options/Learn keys.
[sarosenkrantz@CSCDEVPROD01 ~]$
1Help 2Menu 3View 4Edit 5Copy 6RenMov 7Mkdir 8Delete 9PullDn 10Quit

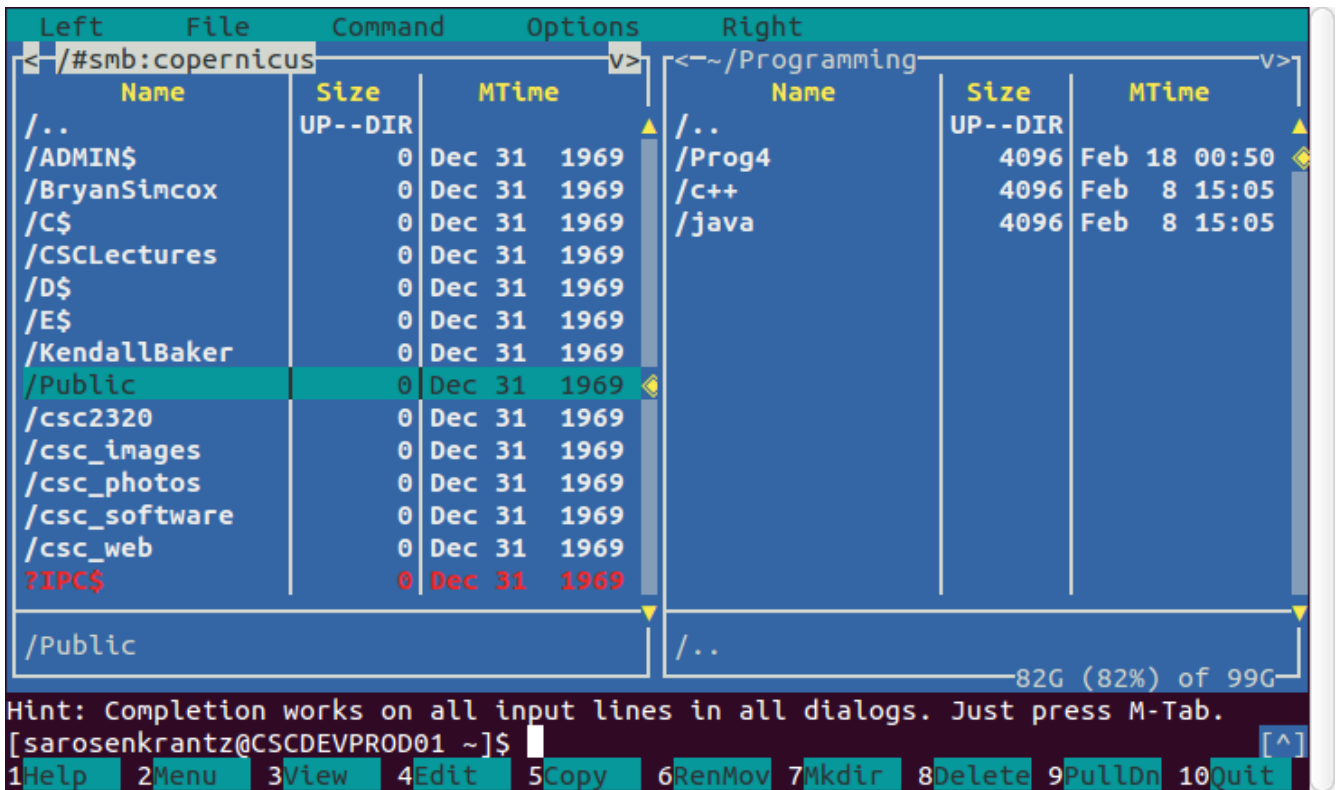
```

Enter the domain, username, and password, use Tab to change fields as needed, then press Enter.



The Domain needs to be txwesleyan, you must use your domain user name, the one you use for Ramlink.

At this point you should have a list of shares, use the down arrow key to move the cursor to the share you need to access and the sub-directory.



Step 3:

Select the file(s) you wish to transfer. You can use Ctrl-t to select multiple files. Then use F5 to copy the selected files to your directory on cscdevprod01

Step 5.

use scp or WinSCP to connect to cscdevprod01 and transfer your files off campus.